



جايتن قران منتری
PRIME MINISTER'S OFFICE
BRUNEI DARUSSALAM

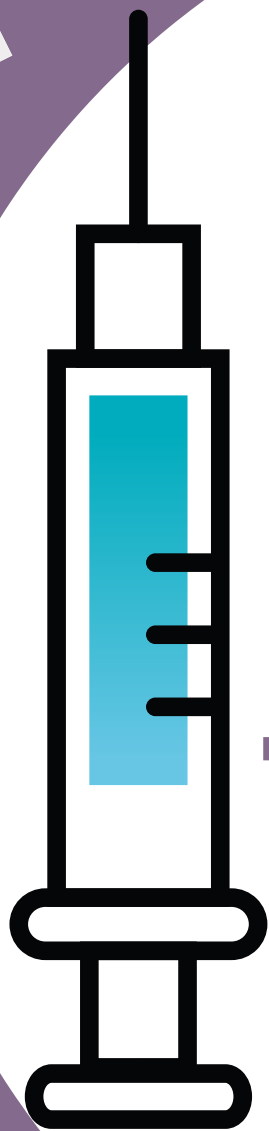


MANDATORY VACCINATION
REQUIREMENTS FOR
OUTBOUND TRAVELLERS

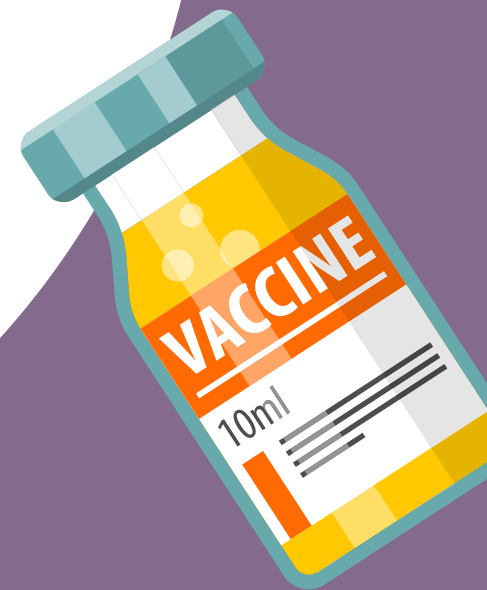
**UPDATES ON
THE EXIT-TRAVEL
APPLICATION GUIDELINES**

**MANDATORY
VACCINATION
REQUIREMENTS**

for Outbound Travellers



EFFECTIVE DATE
1 AUGUST 2021



**ADDITIONAL CONDITION
FOR OUTBOUND TRAVELLERS
TO OBTAIN MANDATORY INJECTIONS
OF THE COVID-19 VACCINATION**

Citizens and residents of Brunei Darussalam applying for exit-travel applications from the Prime Minister's Office to exit the country for the following purposes:



Working abroad



Transport Operators



Foreign workers who wish to return to their country of origin for the purpose of mandatory contract leave, and will return to Brunei Darussalam (on a valid employment pass or dependent's pass);



Business



Other essential travels

CATEGORIES FOR OUTBOUND TRAVELLERS

EXEMPTION



Holders of foreign diplomatic passport



Members of foreign armed forces
(including members of the Gurkha Taker Line and Loan Service)



Travellers with medical contraindications
(such as anaphylaxis, other health problems and pregnancy)



Emergency travel



Travellers aged below 18 years



Vessel crew

CATEGORIES OF THE OUTBOUND
TRAVELLERS THAT ARE EXEMPT FROM
MANDATORY VACCINATION REQUIREMENTS

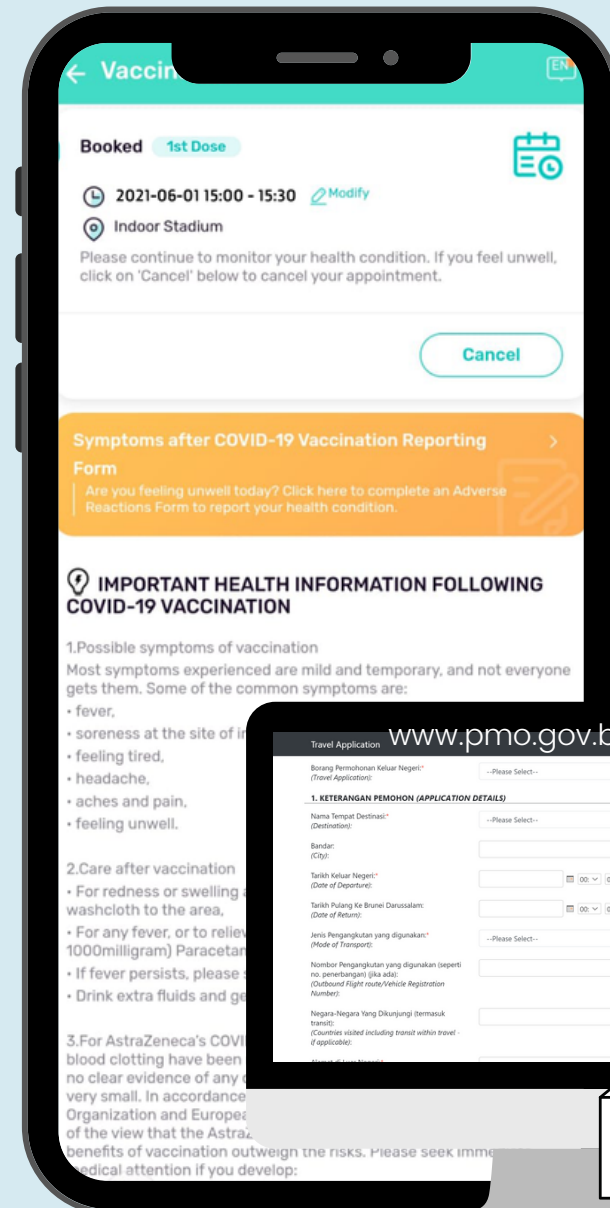




PROCEDURE TO OBTAIN COVID-19 VACCINATION

1 Book your vaccination slots through the BruHealth Application.

2 After obtaining two (2) doses of the COVID-19 vaccine, travellers may apply for the Exit-country application on the Prime Minister's Office Travel Portal by attaching relevant documents as well as a copy of the vaccination card.



FOR FURTHER DETAILS PLEASE CONTACT THE HEALTH ADVICE LINE

REMINDER

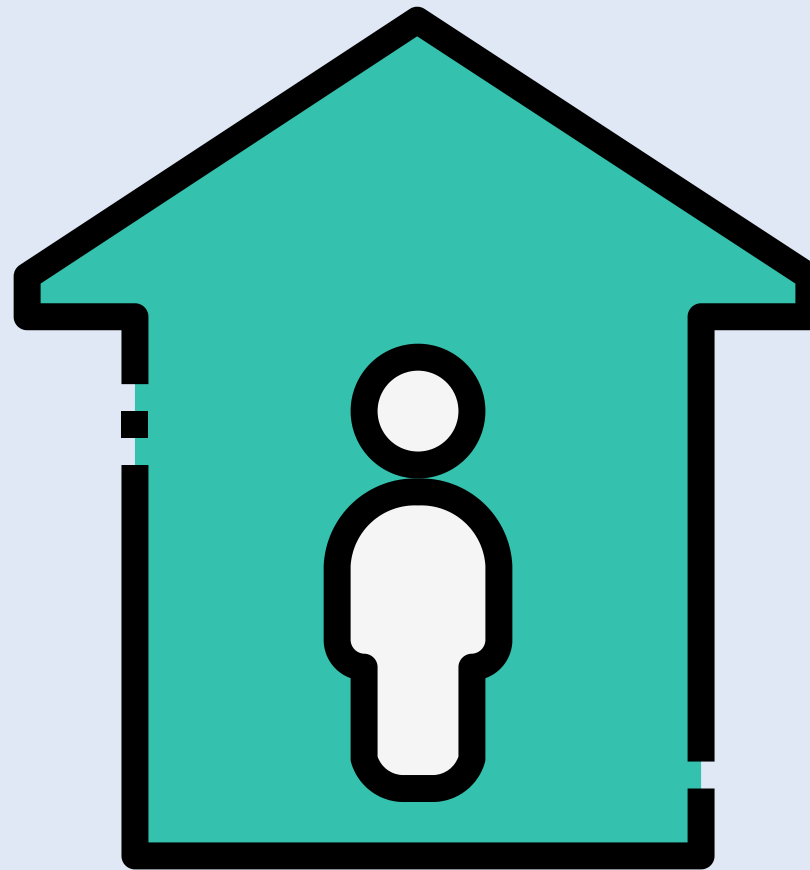
EXIT-TRAVEL APPLICATIONS
WILL NOT BE GRANTED
AUTOMATICALLY EVEN AFTER
OUTBOUND TRAVELLERS HAD
OBTAINED VACCINATION

THE VACCINATION PROCESS IS
CONSIDERED COMPLETE
14 DAYS AFTER OBTAINING
THE SECOND DOSE OF
COVID-19 VACCINATION



Every exit-travel application is subject to evaluation and approval from the Prime Minister's Office as per the guidelines issued before

SELF-ISOLATION

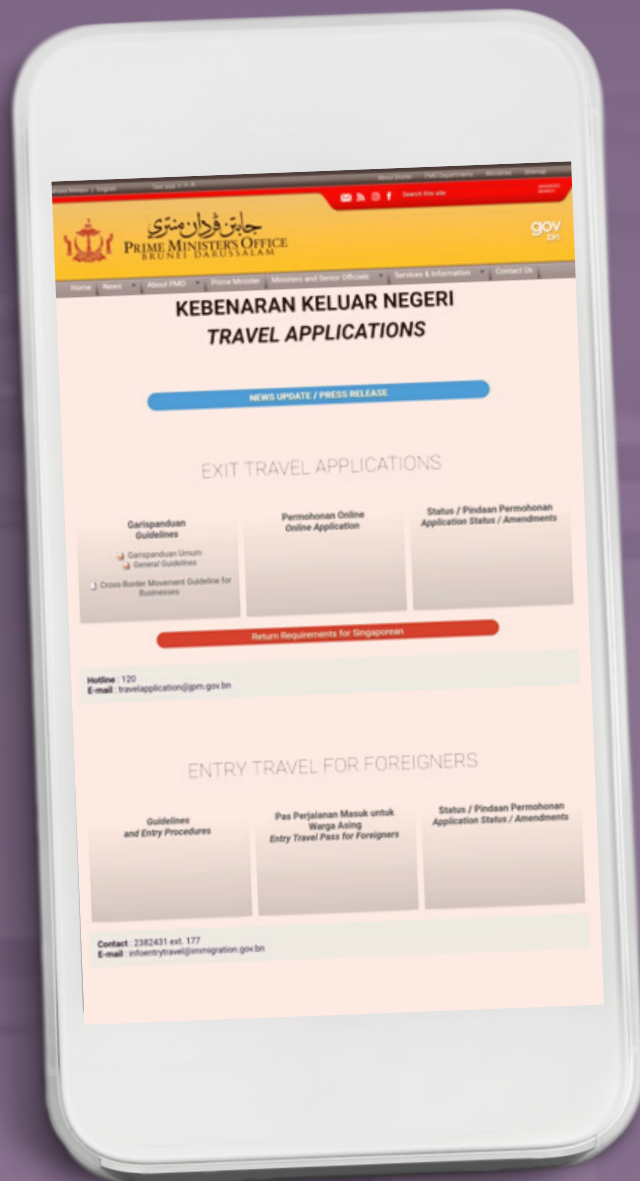


All inbound travellers who will return to Brunei Darussalam from any foreign airports or via land and sea ports will be required to undergo mandatory self-isolation at their respective hotel accommodation for a period as determined by the Ministry of Health's risk assessment



جايتن قران منتری
PRIME MINISTER'S OFFICE
BRUNEI DARUSSALAM

THE MANDATORY VACCINATION REQUIREMENTS
ARE SUBJECT TO REVIEW BY
THE CROSS-BORDER AFFAIRS STEERING COMMITTEE FROM TIME TO TIME



FOR FURTHER INFORMATION
AND DETAILS, PLEASE VISIT
OR CONTACT:



www.pmo.gov.bn/travelportal



120



travelapplication@jpm.gov.bn